

3rd CLARINET
(BASS CLARINET)

CONCERTO FOR ORCHESTRA

I. INTRODUZIONE

Béla Bartók

Andante non troppo Tranquillo

TACET in A 1st Cl. 175

181 etc. 5 1st Cl. Solo

Bass Cl. in Bb 192 198

Take Cl. in Bb 204 210 220 8 2

Sempre più tranquillo

p

231 Vlns. (in Bb) Trpts. 3rd Cl. in Bb 237 1

ff

242 *ff* *f cresc.*

Take B. Cl. in Bb 248 Bass 254 10 265 5 Poco allarg.

272 Tranquillo 288 1 8 Ist Fl. C.A.

300 306

pp dolce

Poch. rit. Tempo I 313 1 9 323 1 5 329 1

Tchaikovsky: Manfred Symphony
First movement

BASS CLARINET

Lento fúgnbre.

Andante. Molto stringendo. Andante.

BASS CLARINET

Mahler Symphony No. 6

Gustav Mahler

Grazioso
(♩=66-72) 23 **9** 24

Bass Clarinet
in Bb

p espr. *pp*

14

p *p*

20

zuruckhaltend *pp* *sfz morendo*

Tempo I. subito.
Sehr energisch!

27 25

Klarinettenkonzert A-Dur

Solo-Klarinette in A

KV 622

W.A. Mozart

Allegro

56



Musical staff 1, measures 56-60. It begins with a treble clef and a key signature of one sharp (F#). The melody starts with a quarter note G4, followed by quarter notes A4, B4, and C5. There are rests in measures 58 and 60.

Musical staff 2, measures 61-64. It continues the melody with eighth and sixteenth notes, including a trill in measure 63.

Musical staff 3, measures 65-67. It features a complex passage with many sixteenth notes and slurs.

Musical staff 4, measures 68-71. It continues the melodic line with various intervals and slurs.

Musical staff 5, measures 72-74. It includes a trill in measure 74 and continues the melodic development.

Musical staff 6, measures 75-77. It features a double bar line in measure 75 and a second measure rest in measure 76.

Musical staff 7, measures 81-83. It contains several triplet markings over eighth notes.

Musical staff 8, measures 84-87. It continues the melodic line with various accidentals and slurs.

Musical staff 9, measures 88-91. It features a melodic passage with slurs and various intervals.

Musical staff 10, measures 92-95. It includes a triplet in measure 93 and a sixteenth-note run in measure 95.

Musical staff 11, measures 96-99. It concludes the passage with a melodic line and a final rest in measure 99.

Musical score for KV622, page 2, measures 100-140. The score is written in treble clef and features a variety of rhythmic patterns and melodic lines. The key signature is one sharp (F#).

Measures 100-103: Melodic line with eighth and sixteenth notes, including a triplet of eighth notes.

Measures 104-106: Melodic line with eighth and sixteenth notes, including a triplet of eighth notes.

Measures 107-109: Melodic line with eighth and sixteenth notes, including a triplet of eighth notes.

Measures 110-111: Melodic line with eighth and sixteenth notes.

Measures 112-115: Melodic line with eighth and sixteenth notes, including a triplet of eighth notes.

Measures 116-119: Melodic line with eighth and sixteenth notes, including a triplet of eighth notes.

Measures 120-123: Melodic line with eighth and sixteenth notes, including a triplet of eighth notes.

Measures 124-126: Melodic line with eighth and sixteenth notes, including a triplet of eighth notes.

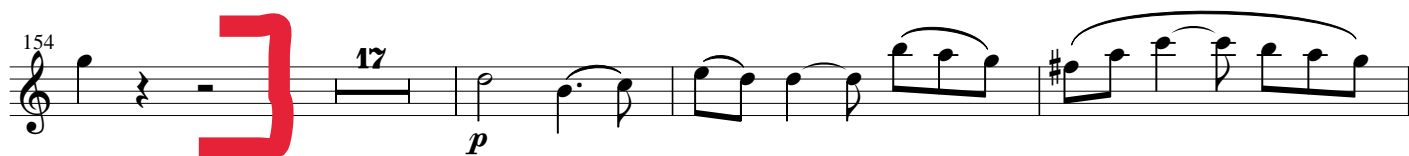
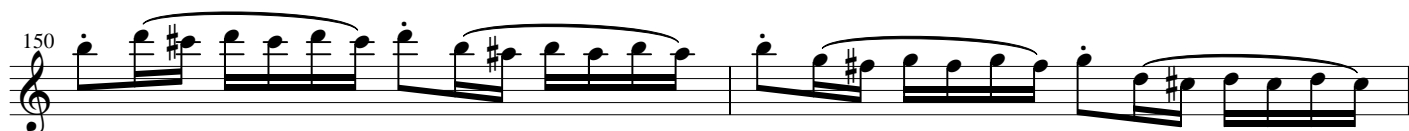
Measures 127-131: Melodic line with eighth and sixteenth notes, including a triplet of eighth notes.

Measures 132-135: Melodic line with eighth and sixteenth notes, including a triplet of eighth notes.

Measures 136-137: Melodic line with eighth and sixteenth notes, including a triplet of eighth notes.

Measures 138-139: Melodic line with eighth and sixteenth notes, including a triplet of eighth notes.

Measures 140: Melodic line with eighth and sixteenth notes, including a triplet of eighth notes.



Musical score for KV622, page 4, measures 194-266. The score is written in treble clef and includes various musical notations such as notes, rests, slurs, and ornaments.

Measures 194-198: Treble clef, quarter notes, eighth notes, and a triplet of eighth notes.

Measures 199-201: Treble clef, eighth notes, quarter notes, and a slur over a quarter note.

Measures 202-205: Treble clef, eighth notes, quarter notes, and a slur over a quarter note.

Measures 206-209: Treble clef, quarter notes, eighth notes, and a slur over a quarter note.

Measures 210-212: Treble clef, eighth notes, quarter notes, and a slur over a quarter note.

Measures 213-219: Treble clef, quarter notes, eighth notes, and a slur over a quarter note.

Measures 220-222: Treble clef, eighth notes, quarter notes, and a slur over a quarter note.

Measures 223-227: Treble clef, eighth notes, quarter notes, and a slur over a quarter note. Includes a trill (tr) and a fermata (20).

Measures 228-252: Treble clef, eighth notes, quarter notes, and a slur over a quarter note.

Measures 253-256: Treble clef, eighth notes, quarter notes, and a slur over a quarter note.

Measures 257-260: Treble clef, eighth notes, quarter notes, and a slur over a quarter note.

Measures 261-265: Treble clef, eighth notes, quarter notes, and a slur over a quarter note.

Measures 266-268: Treble clef, eighth notes, quarter notes, and a slur over a quarter note. Includes a trill (tr) and a fermata (2).

Musical score for KV622, page 5, measures 272-313. The score is written in treble clef and features various musical notations including slurs, accidentals, and triplets.

Measures 272-277: Melodic line with slurs and accidentals (b5, b2, b2).

Measures 281-284: Melodic line with a rest in measure 281, followed by a sequence of eighth notes.

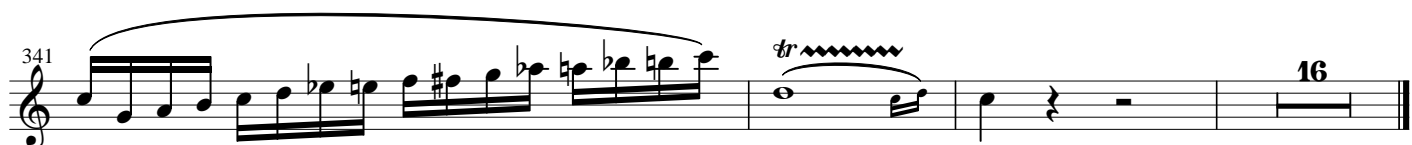
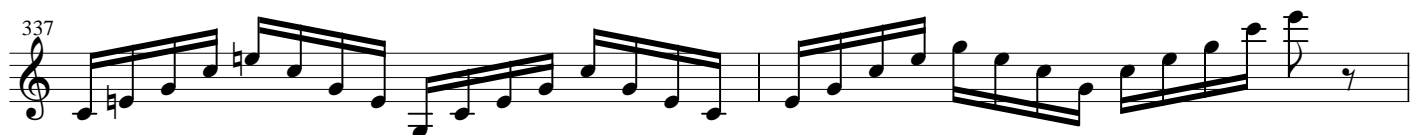
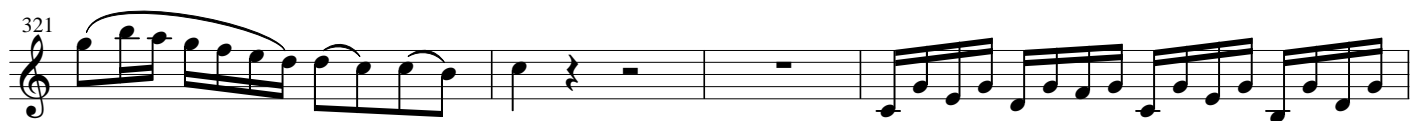
Measures 288-291: Melodic line with slurs and a triplet in measure 291.

Measures 294-297: Melodic line with slurs and a triplet in measure 297.

Measures 299-302: Melodic line with slurs and a triplet in measure 302.

Measures 306-310: Melodic line with slurs, a trill (tr) in measure 310, and triplets in measures 310 and 311.

Measures 313: Melodic line with slurs and a triplet in measure 313.



Adagio

8

17

33

39

43

48

53

56

64

74

95

99

103

f

tr

tr

6

6

6

6

6

6

6

7

7

6

3

3

3

3

3

6

Rondo Allegro

6

17

21

25

30

38

45

51

60

64

70

tr

5

3

3

4

Musical score for KV622, page 9, measures 78-153. The score is written in treble clef and consists of 11 staves of music. The key signature is one flat (B-flat major or D minor). The time signature is not explicitly shown but is implied to be 4/4 based on the notation. The score includes various musical notations such as slurs, ties, and trills. A measure rest of 15 measures is indicated between measures 120 and 140.

Measures 78-83: Melodic line with slurs and ties.

Measures 84-87: Rapid sixteenth-note passages.

Measures 88-91: Rapid sixteenth-note passages.

Measures 92-96: Melodic line with slurs and ties.

Measures 97-101: Melodic line with a trill in measure 97 and rests.

Measures 102-107: Melodic line with rests and ties.

Measures 108-114: Rapid sixteenth-note passages.

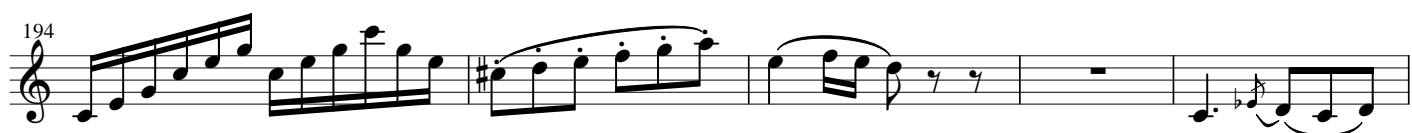
Measures 115-119: Rapid sixteenth-note passages.

Measures 120-140: Melodic line with a 15-measure rest between measures 120 and 140.

Measures 141-145: Melodic line with slurs and ties.

Measures 146-152: Melodic line with slurs and ties.

Measures 153: Melodic line with slurs and ties.



Musical score for KV622, page 11, measures 223-283. The score is written in treble clef and consists of ten staves of music. Measure numbers are indicated at the beginning of each staff: 223, 227, 230, 235, 241, 248, 253, 264, 268, 272, 277, and 283. The music features various rhythmic patterns, including eighth and sixteenth notes, and rests. A dynamic marking of *f* (forte) is present in measure 253. A triplet of eighth notes is marked with a '3' in measures 277 and 283. The key signature has one sharp (F#).

290

295

302

306

310

314

319

323

329

334

339

343

f

tr

tr

tr

tr

tr

tr

tr

tr

tr

3

7

The image displays a page of a musical score for KV622, page 12. The score is written in a single system of ten staves, each beginning with a measure number. The notation includes treble clefs, a 3/4 time signature, and various musical notations such as eighth and sixteenth notes, rests, and accidentals. Performance instructions include a forte dynamic (*f*) and trill markings (*tr*). A triplet of eighth notes is indicated by the number '3' above the staff at measure 295. The score concludes with a final double bar line and a fermata at measure 343.